



2152 South Vineyard, Suite 123  
Mesa, AZ 85210  
e-mail: warddevelopment@yahoo.com  
Office 480.899.4330  
Cell 602.377.6553

## Retail Pad Site

**Location:** Northwest Corner of Deer Valley Road and Miller Road. City of Scottsdale.

**Size:** 1 Acre (approximately)  
43,681 square feet

**Price:** \$650,000  
\$14.88 per square foot

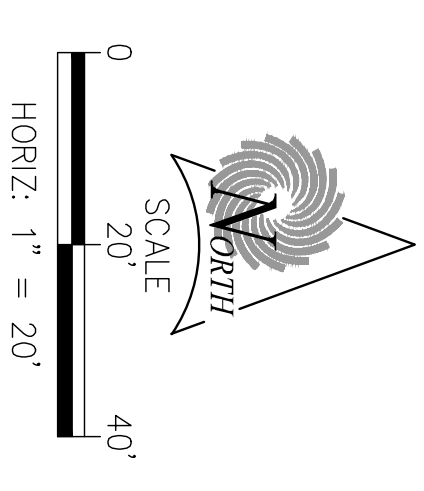
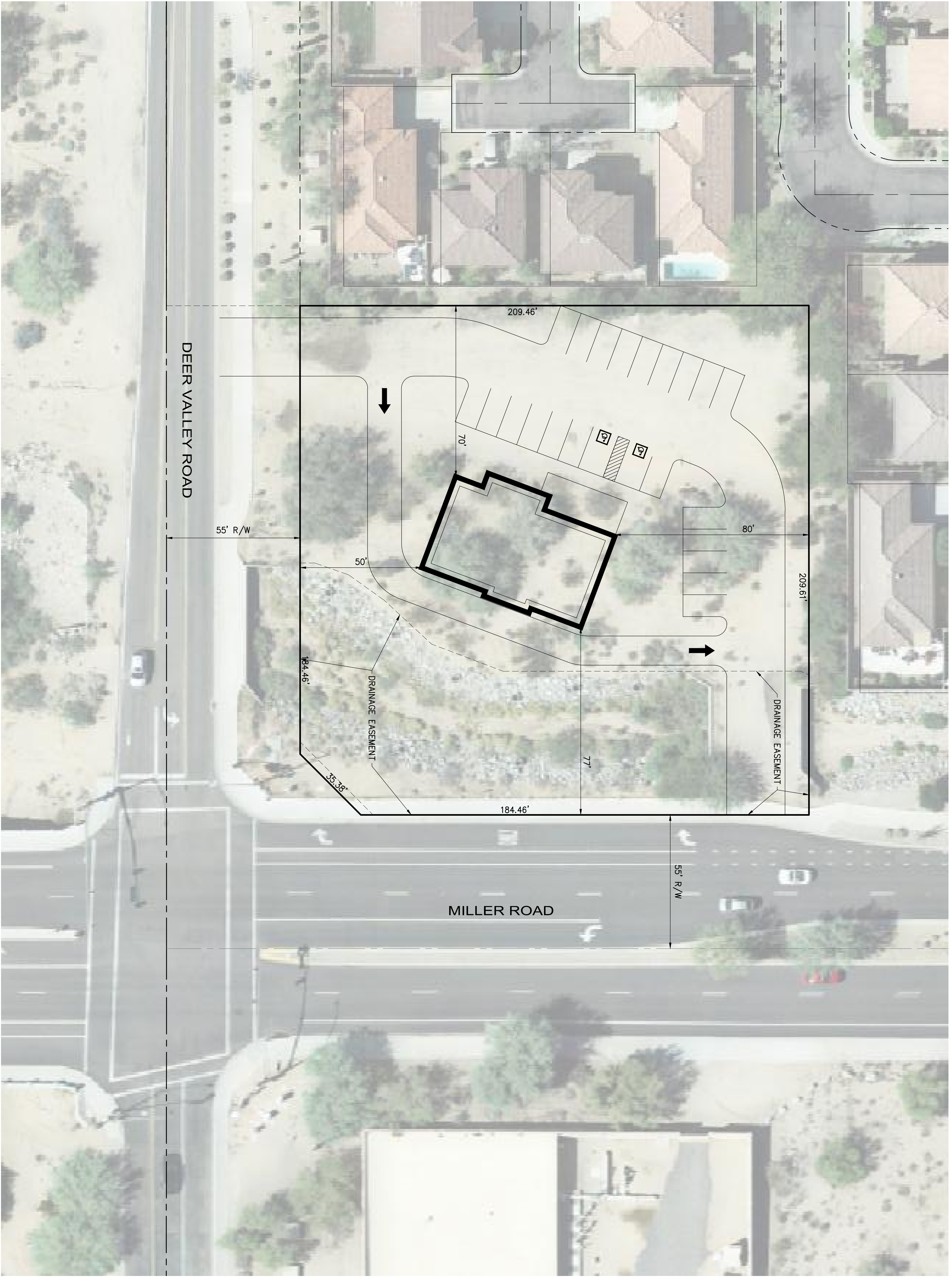
**Improvements:** All off-site improvements are complete.  
→ Traffic signal.

**Comments:** Tremendous retail pad site in north Scottsdale. Ideal for a fast food restaurant or coffee shop. No competition and great visibility. This site is zoned and ready for site plan approval.

**Exclusively Marketed  
by  
Scott F. Ward**

Area Map: Attached  
Site Plan: Attached





SUNRISE  
ENGINEERING

2152 SOUTH VINEYARD, SUITE 123  
 MESA, ARIZONA 85210  
 TEL 480.768.8600 • FAX 480.768.8609  
 WWW.SUNRISE-ENG.COM