



2152 South Vineyard, Suite 123
Mesa, AZ 85210

E-mail: warddevelopment@yahoo.com

Office 480.899.4330

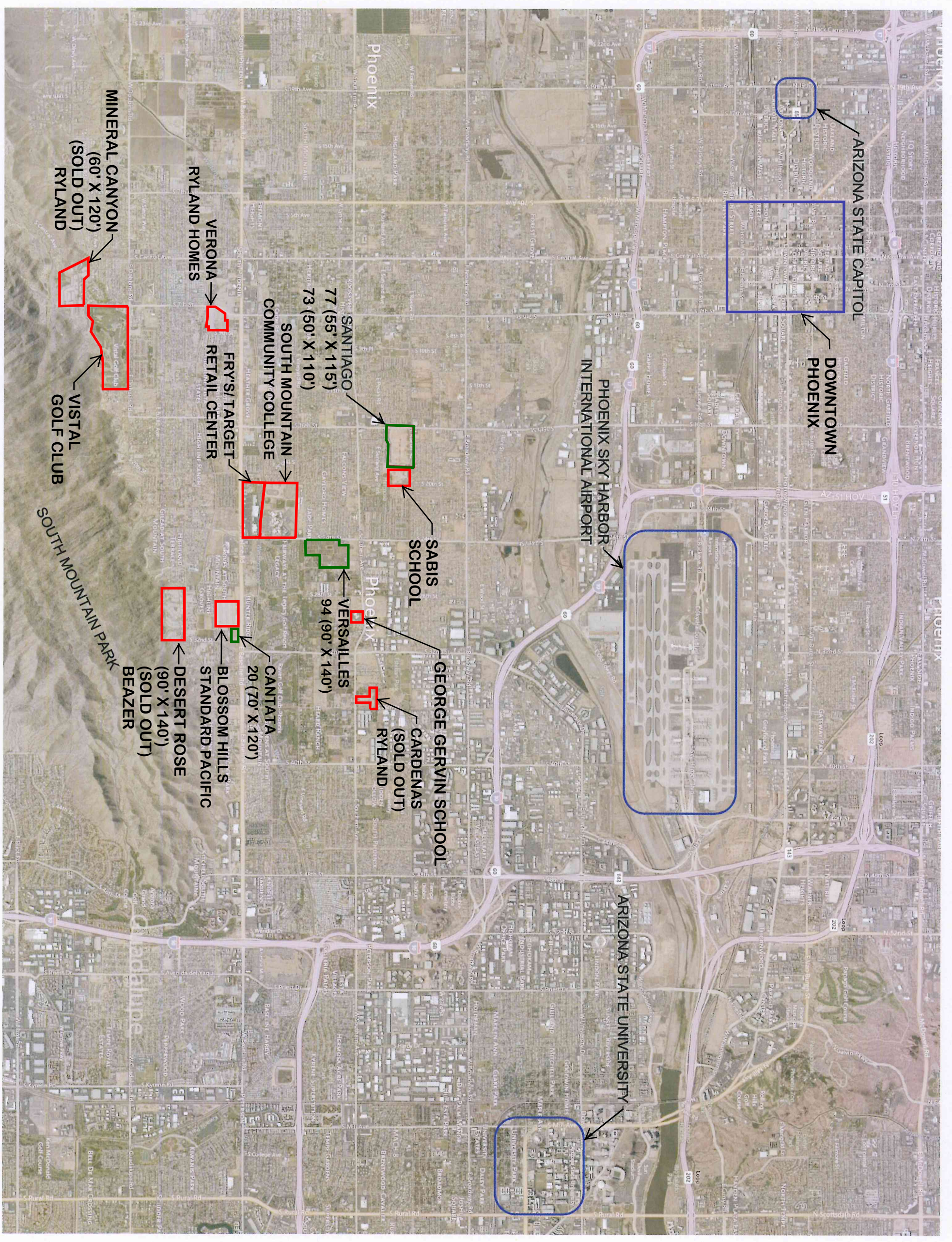
Cell: 602.377.6553

Cantata Boutique Community

- Location:** Southwest corner 32nd Street and Baseline Road. City of Phoenix.
- Home sites:** 20 Luxury Home sites
(70' x 120') 8,400 SF
- Price:** \$1,100,000
\$55,000 a platted and engineered lot
\$38,092 construction budget
\$93,092 finished lot
* No City of Phoenix impact fee.
- Improvements:** All offsite improvements are complete.
- Baseline Road is improved with utilities to the site.
- Perimeter walls on 2 sides are finished.
- Comments:** This is an outstanding, infill, gated community of 20 lots. The site has an excellent marketing window on Baseline Road with over 35,000 cars a day. Beazer Homes is sold out at Desert Rose to the south with sales over 700K. Standard Pacific is under construction contiguous to the west with sales to start over 400K. There are over 110,000 jobs within a 5 mile radius of this site with a tremendous demand for new homes.

**Exclusively Marketed
by
Scott F. Ward**

Area Map: Attached
Site Plan: Attached



SCALE
 0 2000' 4000'
 HORIZ. 1" = 2000'



SUNRISE
 ENGINEERING
 2152 SOUTH VINEYARD, SUITE 123
 MESA, ARIZONA 85210
 TEL. 480.768.8600 • FAX 480.768.8609
 WWW.SUNRISE-ENG.COM



122-96-008J

122-96-007D

122-96-007C



301-26-684

301-26-677

301-26-015H

301-26-674

301-26-686

301-26-657

301-26-654

301-26-688

301-26-636

301-26-637

301-26-635



001-05-491

001-05-492

001-05-493

001-05-494

001-05-495

001-05-496

001-05-497

001-05-498

001-05-499

001-05-500

001-05-499

001-05-500

001-05-501

001-05-502

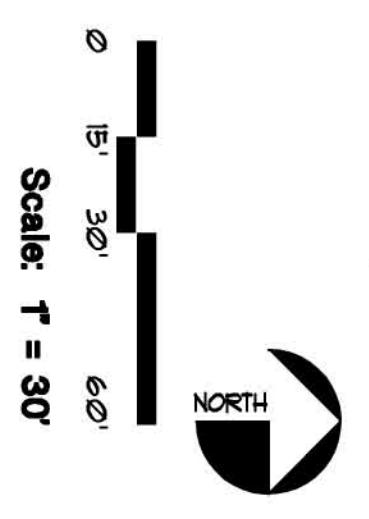
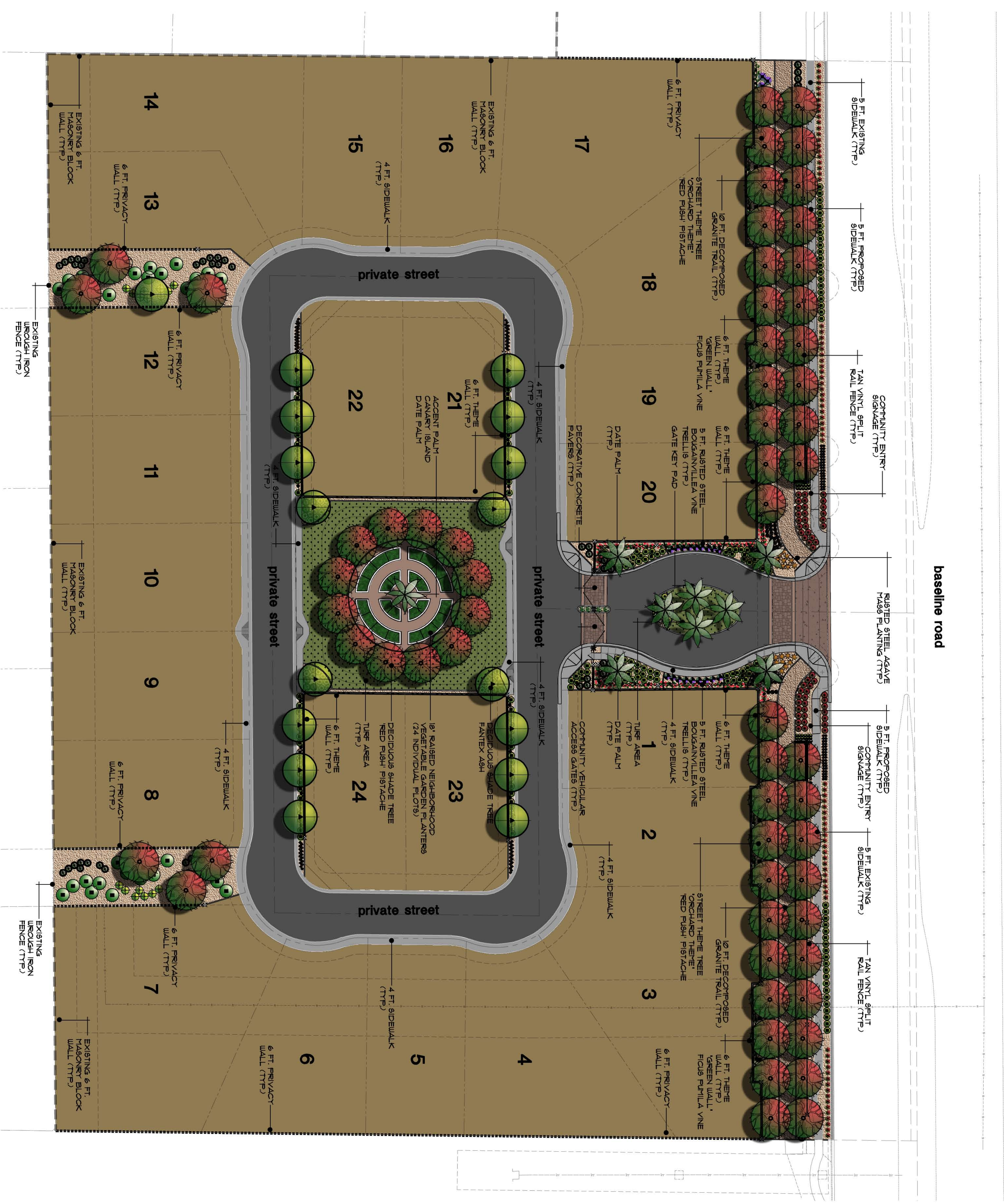
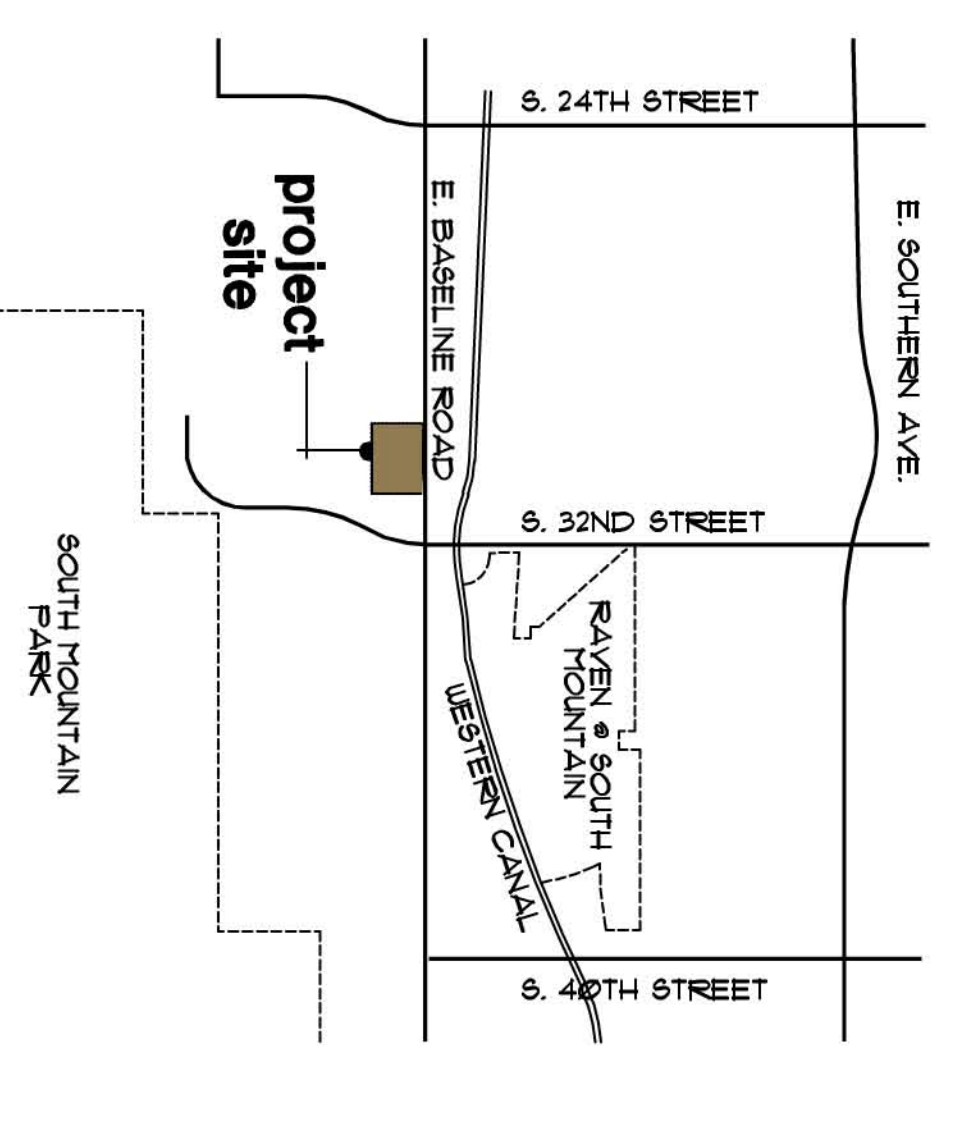
001-05-497

001-05-498

plant schedule:

SYMBOL	BOTANICAL / COMMON NAME	SIZE
	TREES: FRAXINUS VELUTINA 'FANTEX' FANTEX ASH PISTACHIA NUT PISH PHOENIX DACTYLIFERA DATE PALM	15 GAL. 24" BOX 20 FT. TRUNK
	SHRUBS: RIPELLIA PENINSULARIS TELOD STAR VELICOU BELL'S	5 GAL. 5 GAL.
	GRASSES: BOULEGUA GRASS 'B' BLUE 'AMBITION' CAREX THIMULIDA BLUE GRASS (TM) MULTI-BERGIAL-AUTUMN GLOW AUTUMN GLOW DEER GRASS	1 GAL. 1 GAL. 1 GAL. 1 GAL.
	ACCENTS: ALICE X BLUE ELF HEBERALOE PARVIFOLIA PEDILANTHUS MACROCARPUS LADY'S SLIPPER	3 GAL. 5 GAL. 5 GAL.
	PERENNIALS / GROUND COVER: HYPERICUM ACULIS HYPERICUM ACULIS BLACKIE FURFUR SWEET POTATO VINE BLACKIE LANTANA 999 'DALLAS RED' DALLAS 999 RED LANTANA LANTANA 999 'NEW GOLD' ACACIA NEPOLENS 'DESERT CAREPET' TM DESERT CAREPET CYDON DACTYON 'MID-IRON' MID-IRON BERTHIDA GRASS	1 GAL. 1 GAL. 1 GAL. 1 GAL. 1 GAL. 1 GAL. 1 GAL. 1 GAL. 50D
	VINES: BIGONIA RADICANS 'CREEPER' COTTON TUFTET BOUGAINVILLEA S. BARBADA KASST BARBADA KASST BOUGAINVILLEA FICUS PUNILA GREENING FIG VINE	5 GAL. 5 GAL. 5 GAL. 5 GAL.
	MATERIALS: DECOMPOSED GRANITE TRADISON GOLD PHOENIX PISTACHE RUSTED STEEL AGAVE LOCATED IN LOT	1/2" MINUS 54336

vicinity map:

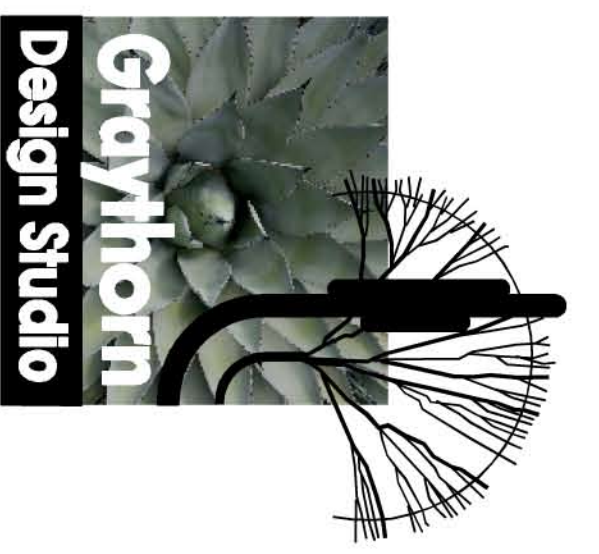


Cantata

32nd Street & Baseline Road

Ward Development

2152 S. Vineyard, Ste. 123, Mesa, Arizona 85210



Planning
Landscape Architecture
1881 E. Hartson Street
Chandler, AZ 85225
480 782 7110
480 782 7015 fax

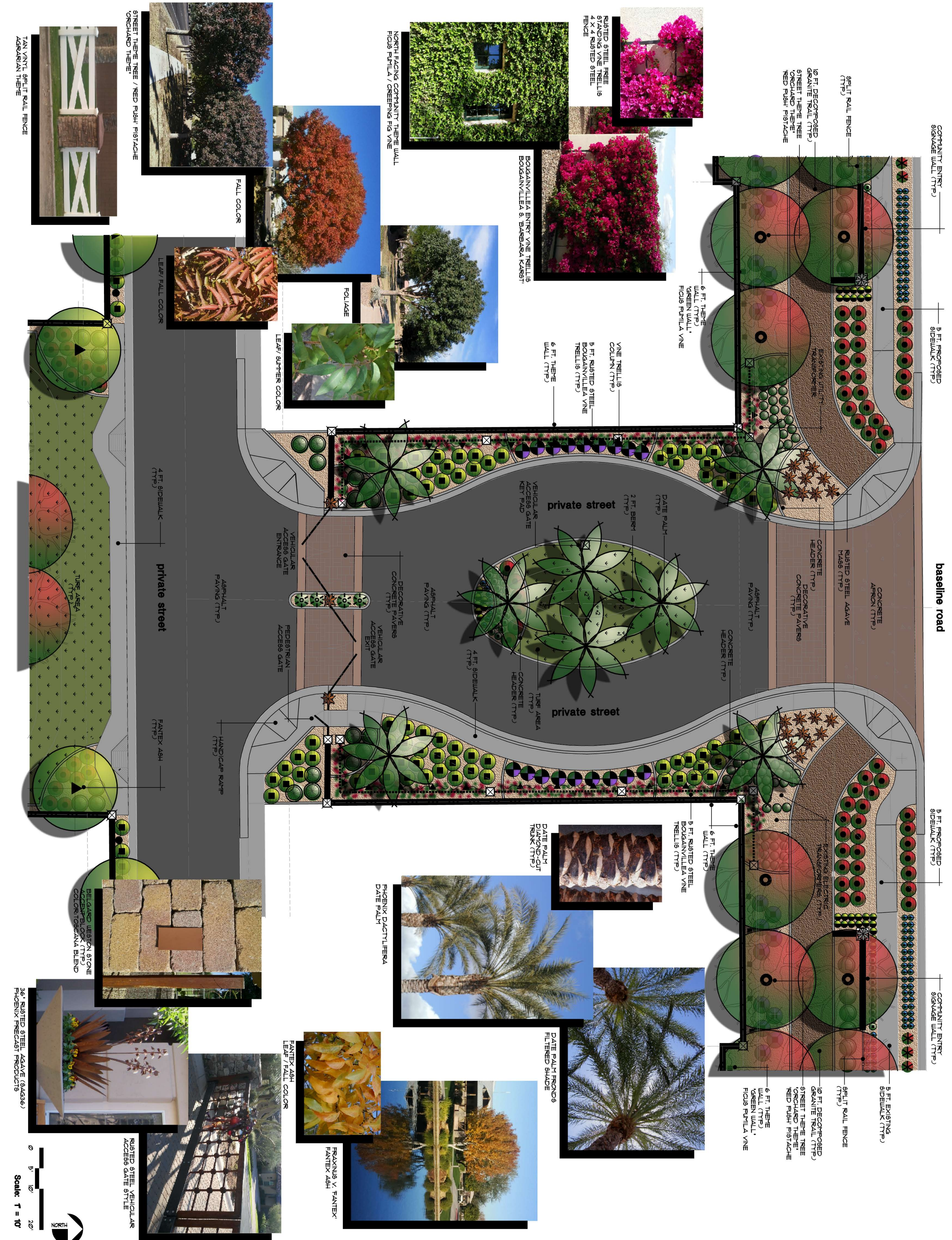
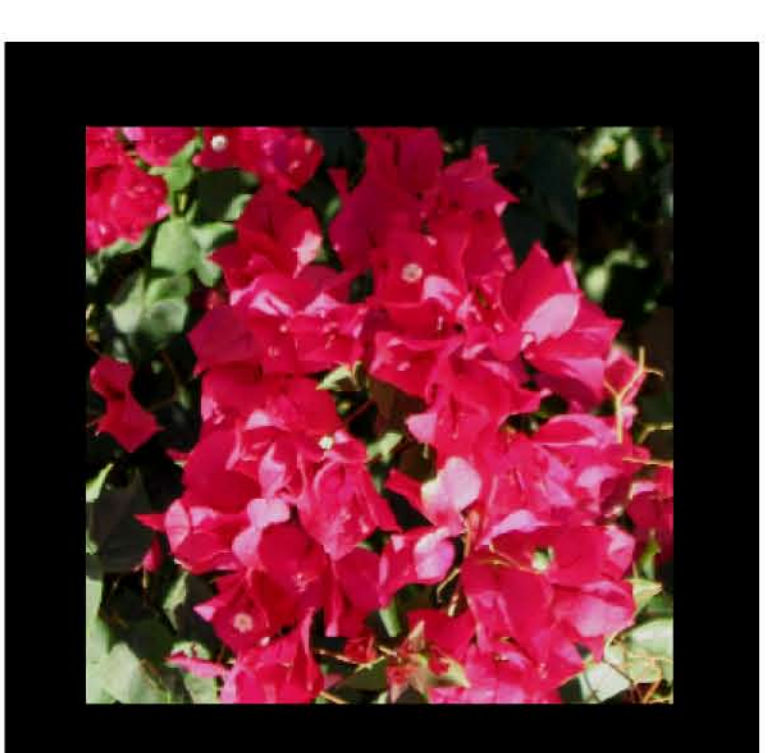
Date : February 4, 2013

conceptual
landscape plan

Cantata

32nd Street & Baseline Road

Ward Development
2152 S. Vineyard, Ste. 123, Mesa, Arizona 85210



Grythorn Design Studio

Planning
Landscape Architecture
1881 E. Harrison Street
Chandler, AZ 85225
480 782 1110
480 782 1015 fax

community entry
hardscape &
landscape design



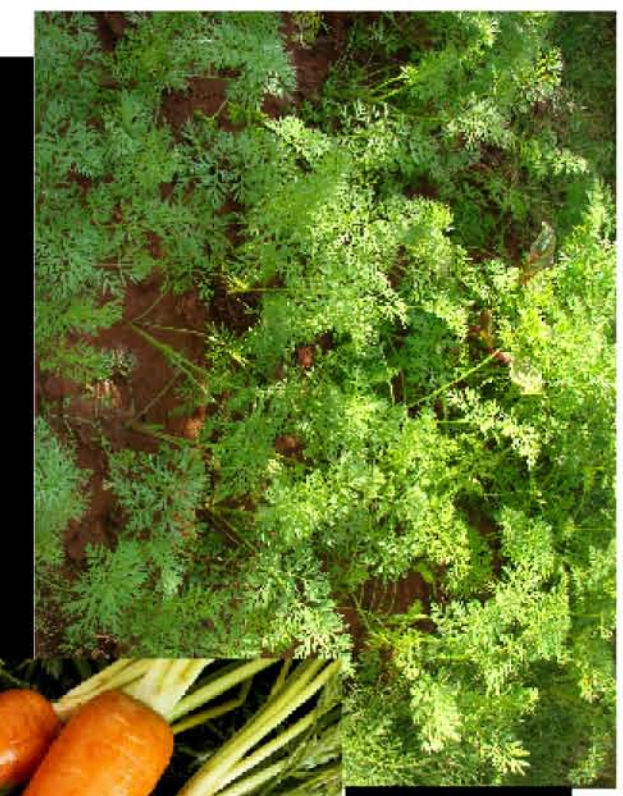
sweet corn



herbs



sunflowers



carrots



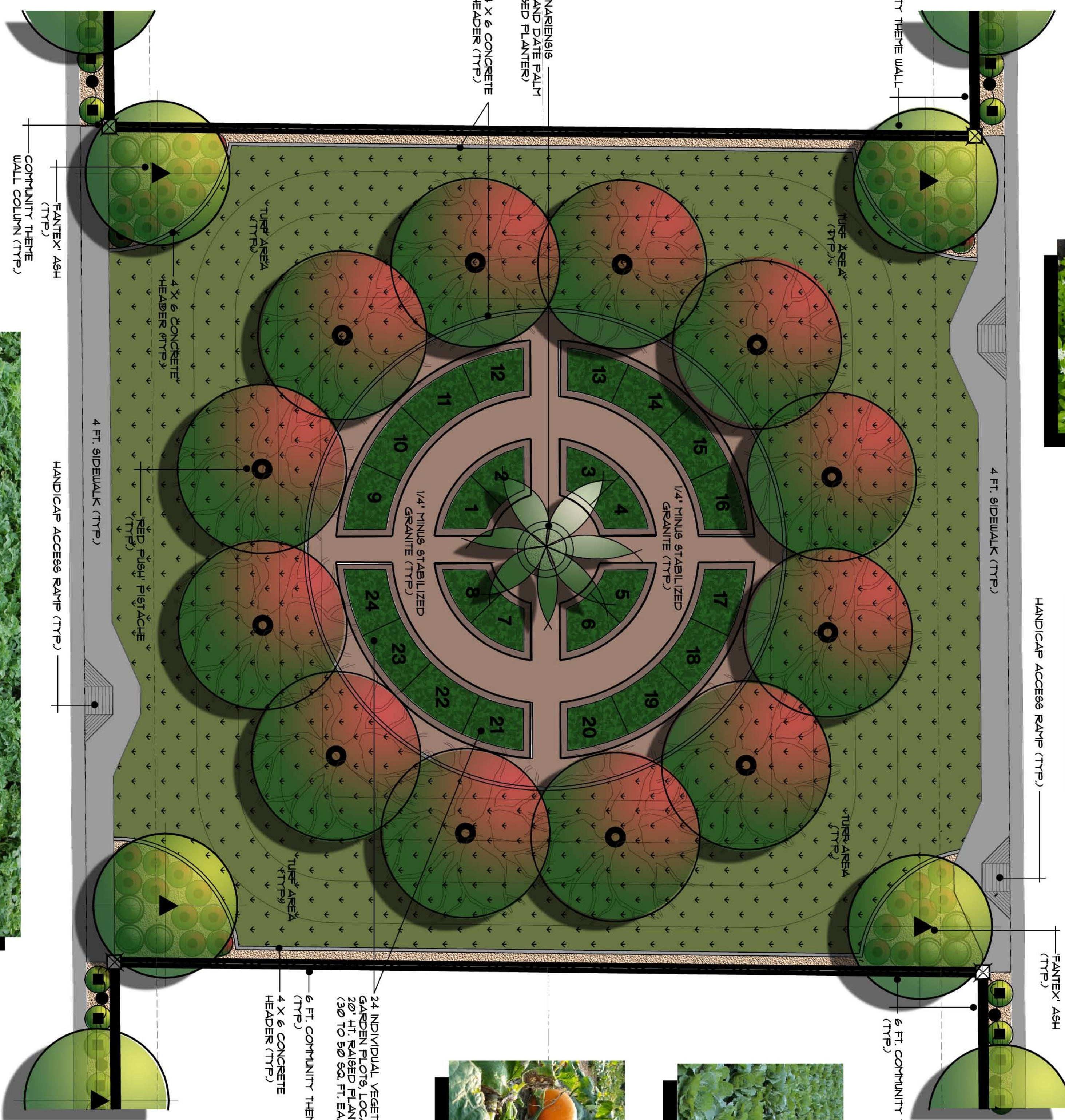
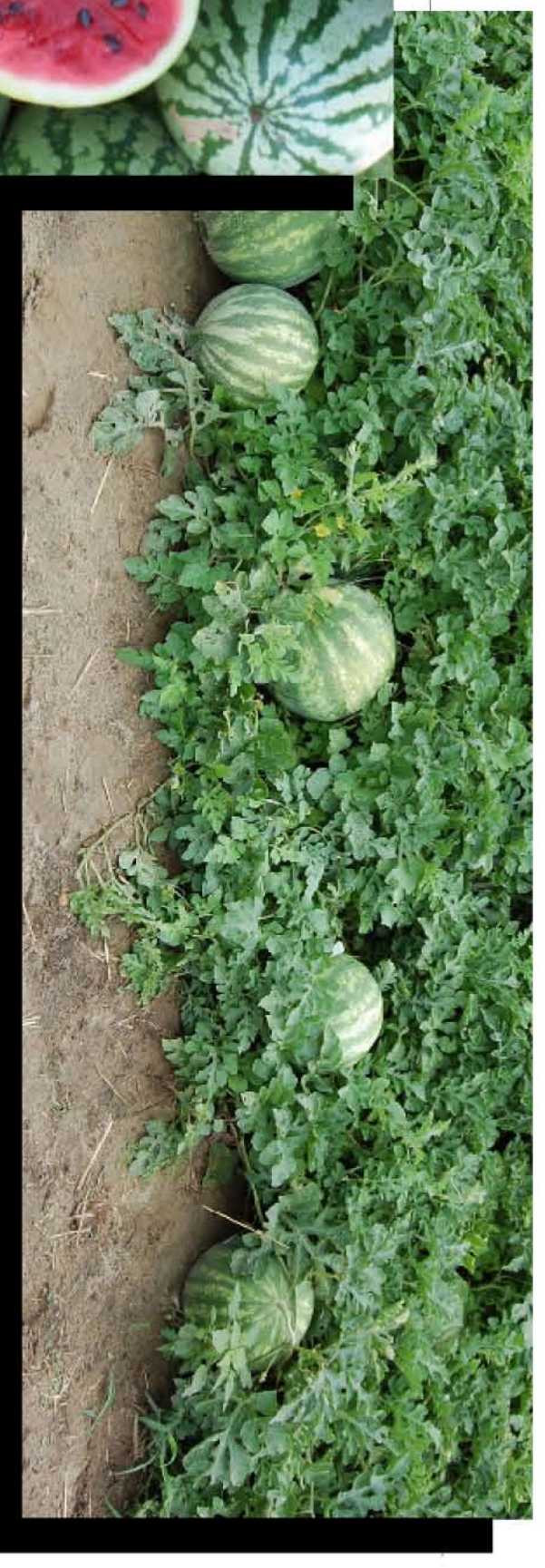
peas



tomatoes



watermelons



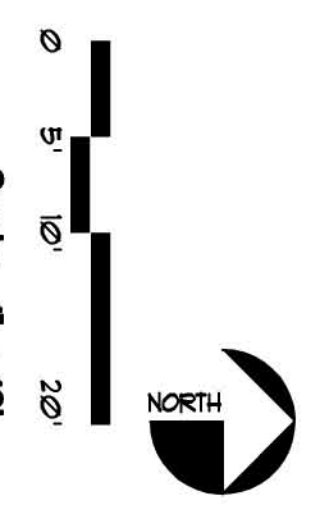
pumpkins



lettuce



onions



Cantata

32nd Street & Baseline Road

Ward Development

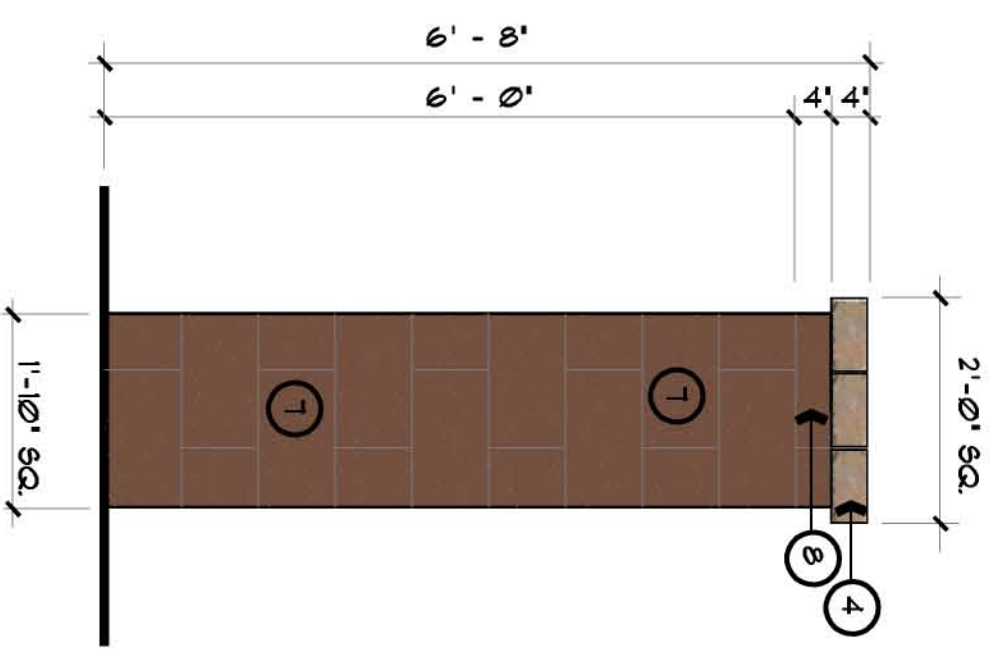
2152 S. Vineyard, Ste. 123, Mesa, Arizona 85210



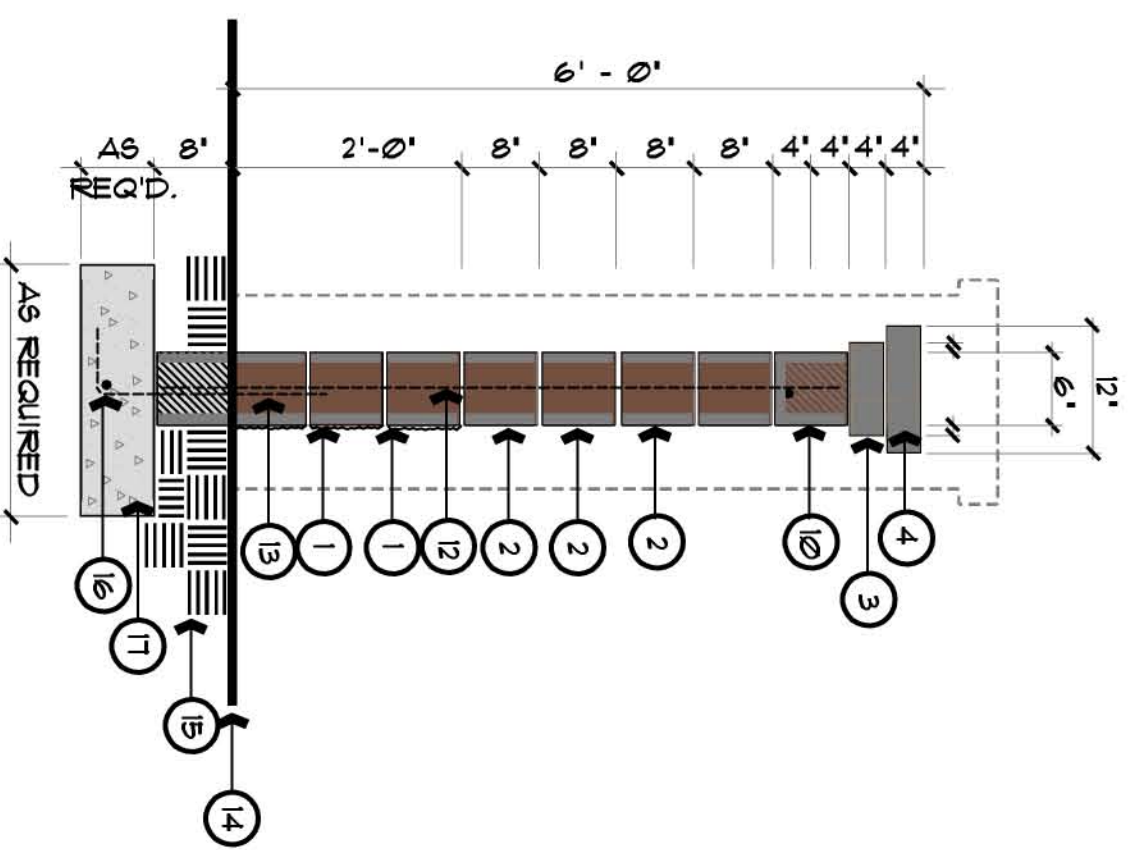
Planning
Landscape Architecture
1881 E. Harrison Street
Chandler, AZ 85225
480 782 7110
480 782 7015 fax

Date : February 4, 2013

community open
space / vegetable
garden



6 ft. community theme wall column - elevation

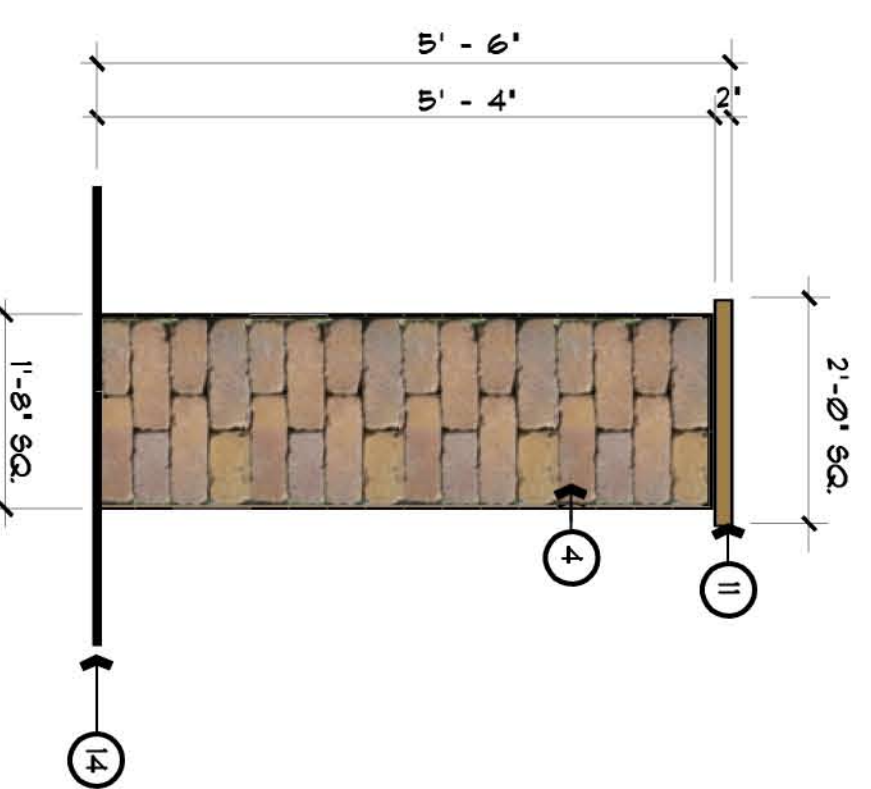


6 ft. community theme wall - section

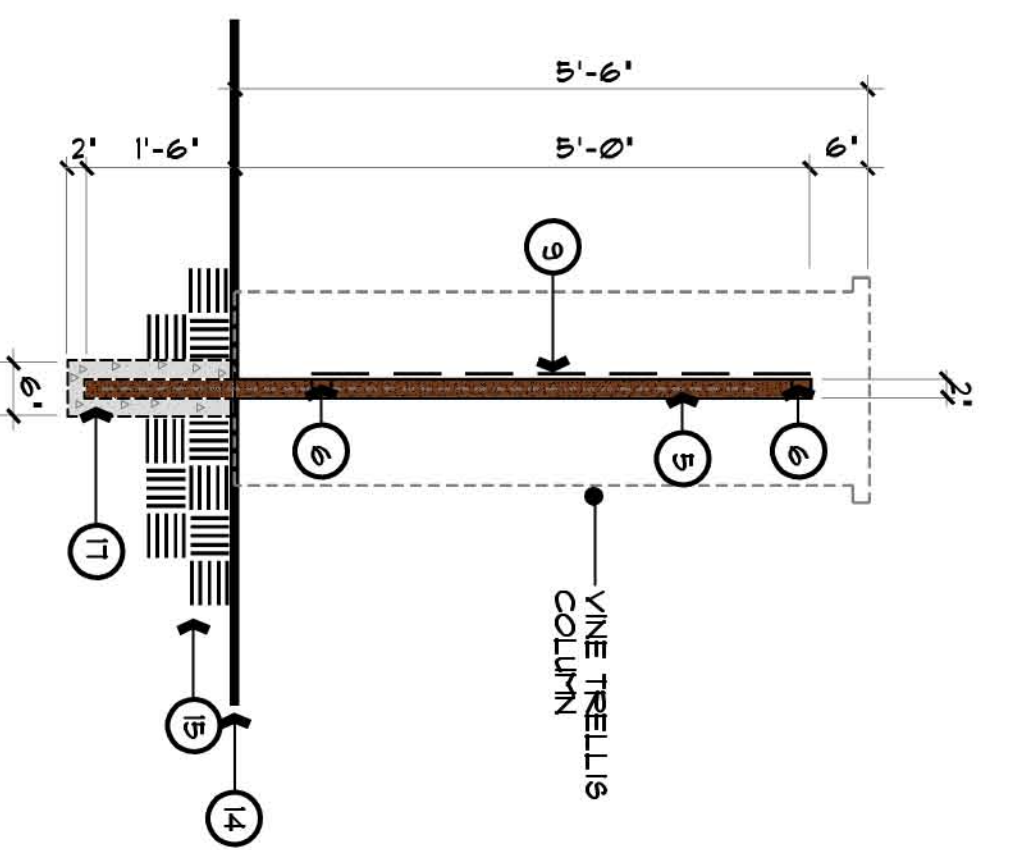


6 ft. community theme wall - elevation

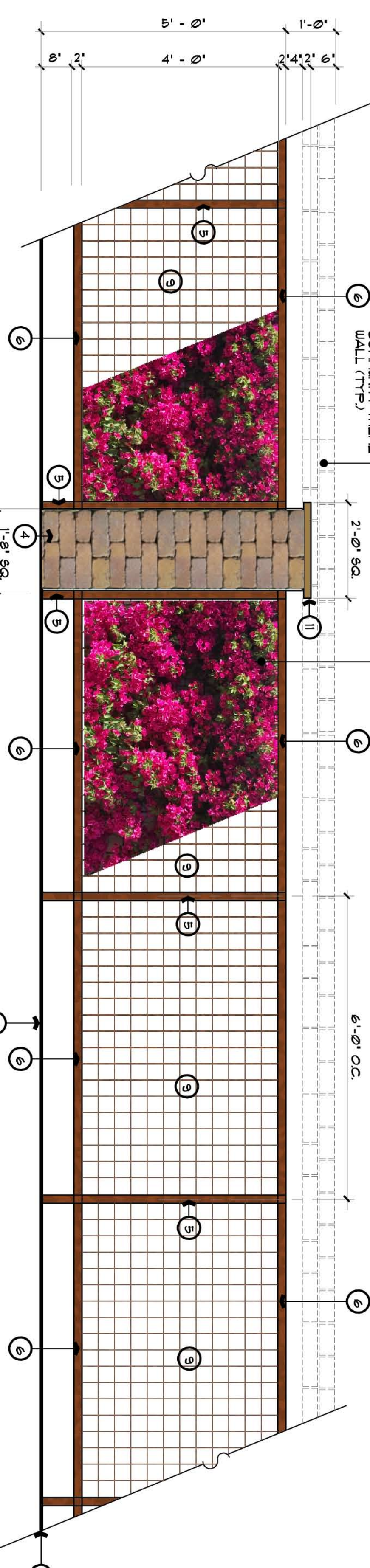
theme wall vertical grade wall transition



5 ft. vine trellis fencing column - elevation



5 ft. vine trellis fencing - section



5 ft. vine trellis fencing - elevation

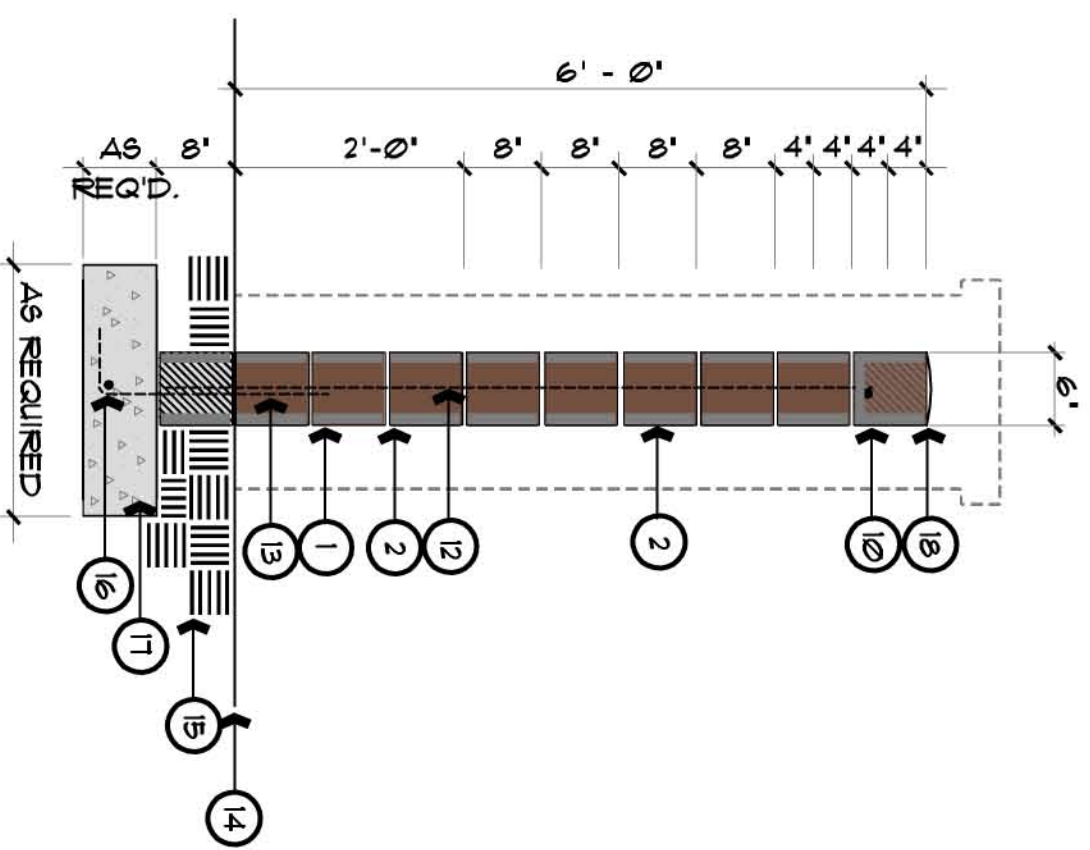


WESTON STONE ACCENT BLOCK (COLOR: TOISCANA BLEND) w/ (3) THREE FRAZEZE COLOR PAINT CHIPS (LEFT TO RIGHT)

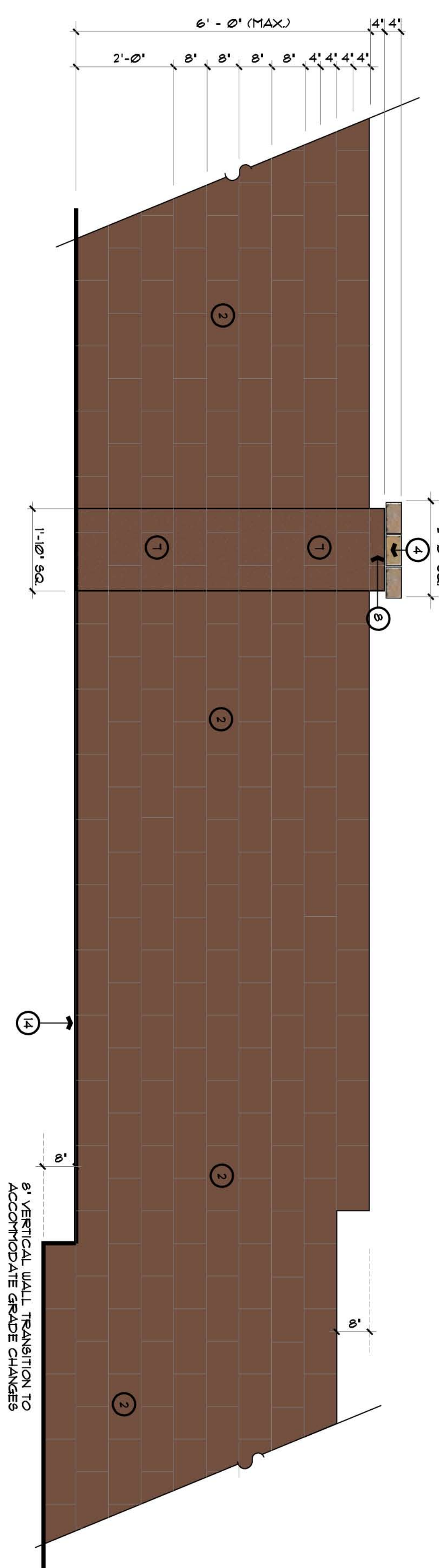
FRAZEZE COLOR	LOCATION
82266N BURNTSIDE	THEME WALL BLOCK COLOR
82366N GUMNUT	VINE TRELLIS COLUMN ACCENT CAP
82366N SWEET EARTH	COLORLED CONCRETE ACCENT FOR

weston stone accent block & theme wall color scheme

6 ft. community privacy wall - section

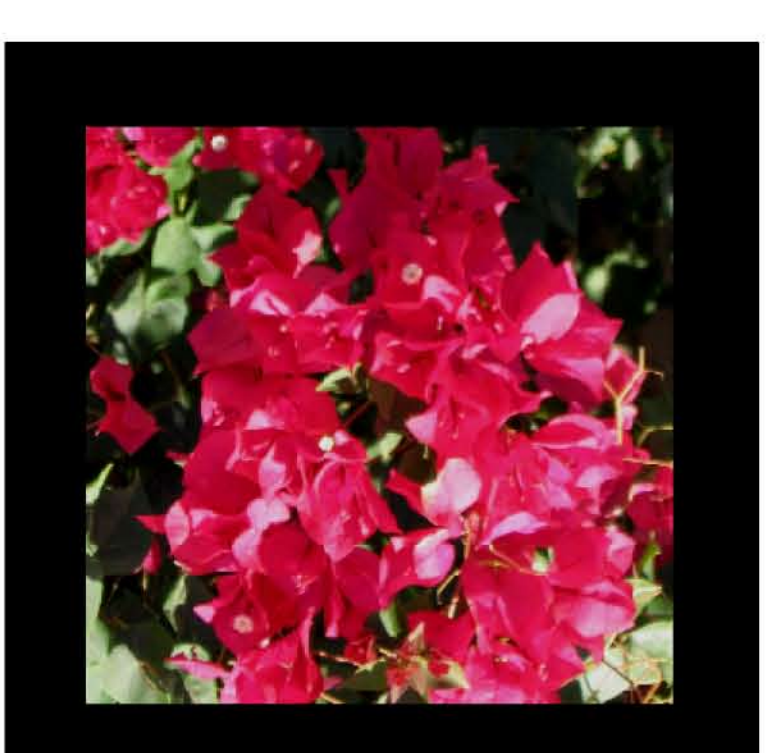


6 ft. community privacy wall - elevation



community theme & view wall construction notes:

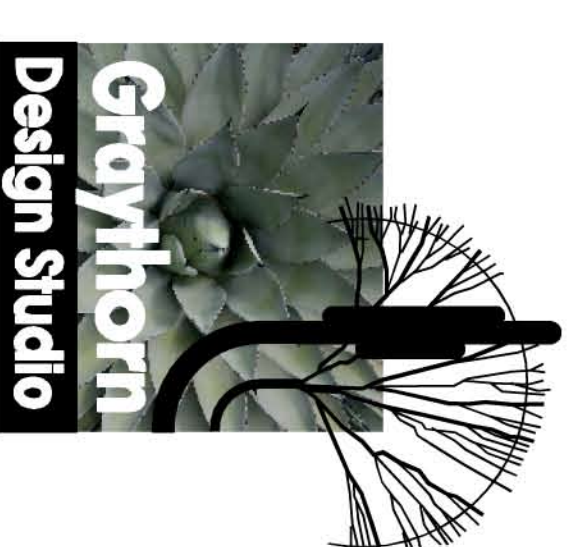
- 1) 8' X 8' X 1/2" CHU SPILT-FACE BLOCK (GRADE) PAINT FRAZEZE COLOR BURNTSIDE (82266N) LRV/2
- 2) 8' X 6' X 1/2" CHU SMOOTH FACE BLOCK PAINT FRAZEZE COLOR BURNTSIDE (82266N) LRV/2
- 3) BELGAARD WESTON STONE 3-PIECE BLOCK 4' X 8' X (8', 12', 16') COLOR: TOISCANA BLEND
- 4) BELGAARD WESTON STONE UNIVERSAL BLOCK 4' X 8' X 12' COLOR: TOISCANA BLEND
- 5) 2' SQ. REINFORCED STEEL POST, INSERT (1) 1/4" REBAR IN CENTER OF SQUARE TUBE AND GROUT SOLID FOR LONG-TERM STABILITY. INSERT BLACK PLASTIC CAP WHEN COMPLETE.
- 6) 2' SQ. REINFORCED STEEL RAIL (TTP)
- 7) 6' X 8' X 1/2" CHU SPILT-FACE BLOCK (GRADE) PAINT FRAZEZE COLOR BURNTSIDE (82266N) LRV/2
- 8) 6' X 4' X 1/2" CHU SPILT-FACE BLOCK (GRADE) PAINT FRAZEZE COLOR BURNTSIDE (82266N) LRV/2
- 9) MILDWELD WIRE MESH FABRIC, (222507) FACT FIELD WIRE, FAST TO STEEL POST. HORIZONTAL REBAR IN 4' & 8' SPACINGS. HORIZONTAL SIZE REBAR AS REQUIRED.
- 10) FIBERGLASS REINFORCED POLYESTER PRODUCTS LOCAL 7.44 80.71 GALNUT FIBERGLASS REBAR (1AN (SIZE AS REQUIRED))
- 11) FIBERGLASS REINFORCED POLYESTER PRODUCTS LOCAL 7.44 80.71 GALNUT FIBERGLASS REBAR (1AN (SIZE AS REQUIRED))
- 12) DOULES TO MATCH LAP VERTICAL REINFORCEMENT, SOLID GROUT WALL
- 13) DOULES TO MATCH LAP VERTICAL REINFORCEMENT, SOLID GROUT WALL
- 14) FINISH GRADE
- 15) 90% COMPACTED SUBGRADE
- 16) HORIZONTAL REBAR - CONTINUOUS (SIZE AS REQUIRED)
- 17) 2500 PSI CONC. FOOTING, SIZE PER STRUCTURAL RECOMMENDATION
- 18) ROUNDED MORTAR CAP



Cantata

32nd Street & Baseline Road

Ward Development
2152 S. Vineyard, Ste. 123, Mesa, Arizona 85210



Planning
Landscape Architecture
1881 E. Harrison Street
Chandler, AZ 85225
480 782 7110
480 782 1015 fax

Date : February 4, 2013

community
theme walls &
view fence



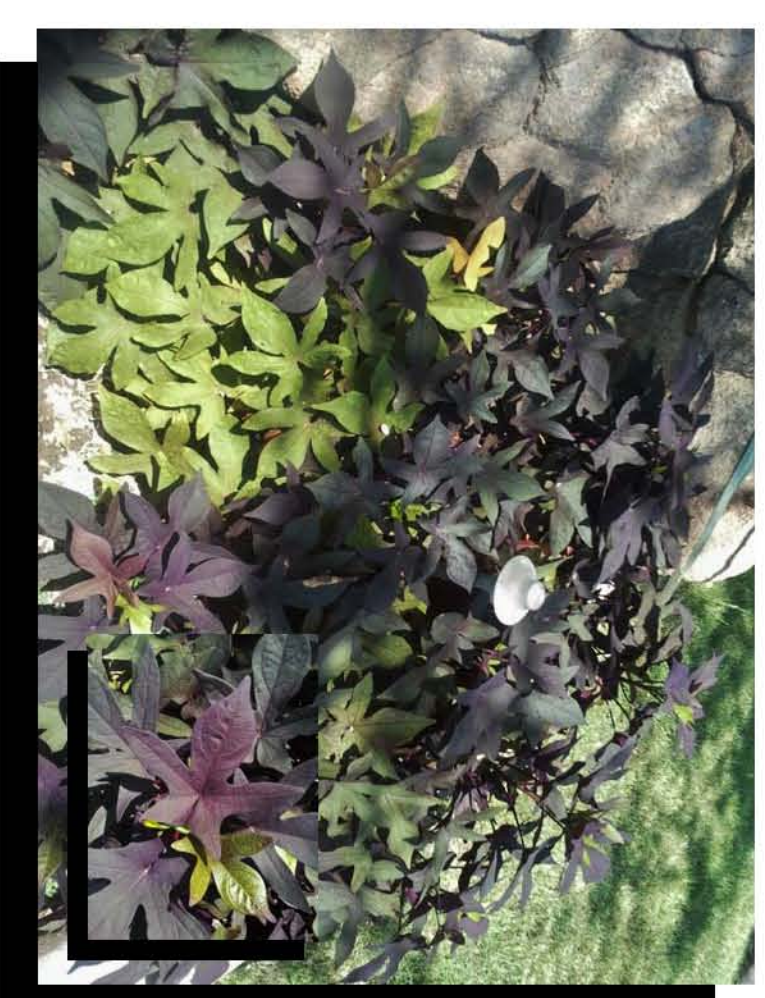
BIGNONIA RADICANS
'COTTON RUFFET CREEPER'



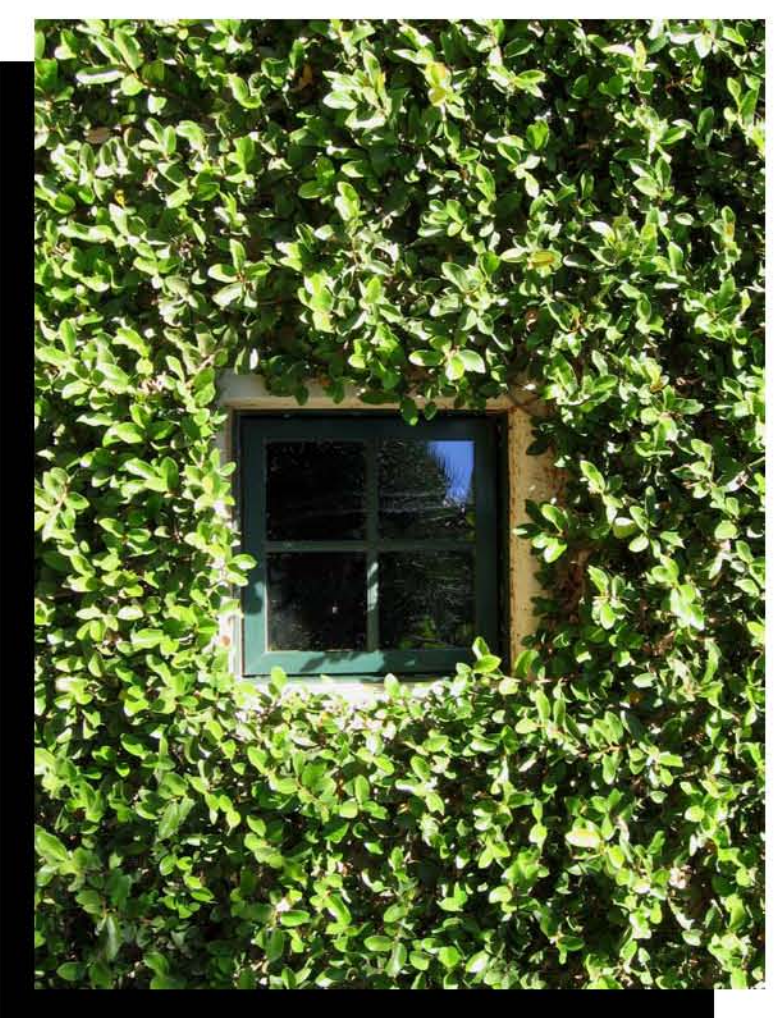
BOUTELLOIA G. 'BLONDE AMBITION'
'BLOND AMBITION BLUE GRASS' (1m)



TECOMA STANS 'Y & GOLD STAR'
GOLD STAR YELLOW BELLS



IPOMOEA BATATAS ('POTATO VINE')
BLACKIE'



FIGUS RUMPA
'CREEPING FIG VINE'



MULIENSIS 'LANTANA GOLD'
LANTANA GOLD-TREE GRASS (1m)



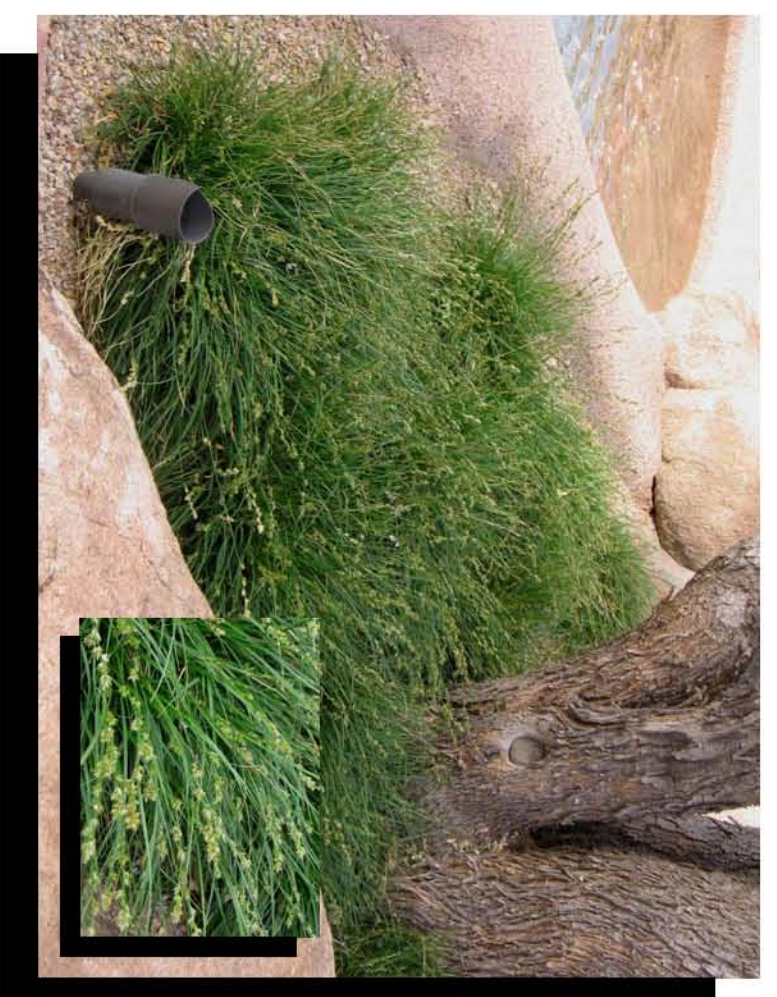
BELLIA PENINSULARIS
BLLA BELLIA



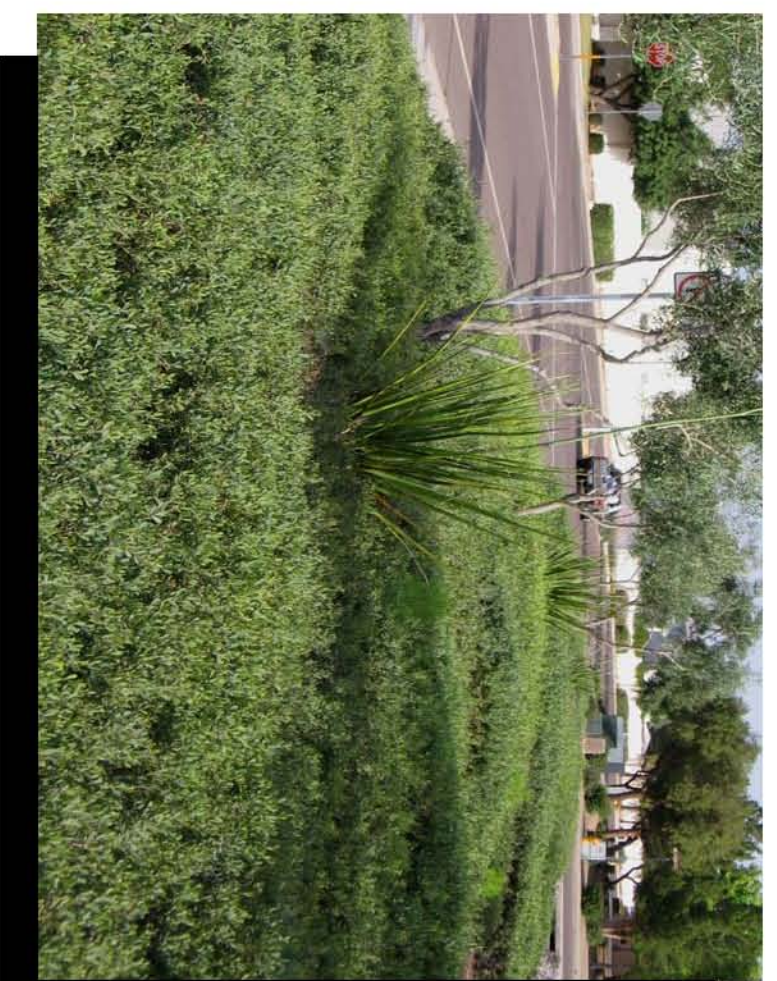
IPOMOEA BATATAS ('POTATO VINE')
'QUEEN CAROLINA SUE' 'LEARN' PURPLE'



BOUQUINILLA & BARRADA 'KARST'
BARRADA 'KARST' BOUQUINILLA



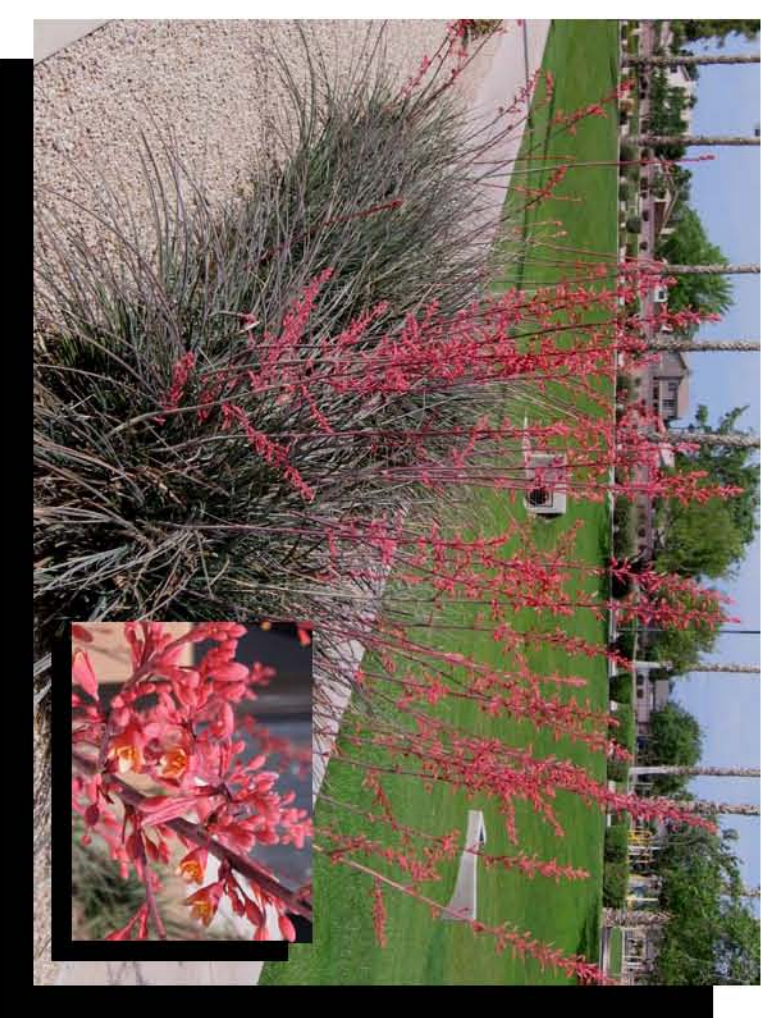
CAREX TITULICOLA
BERKELEY BEDE GRASS



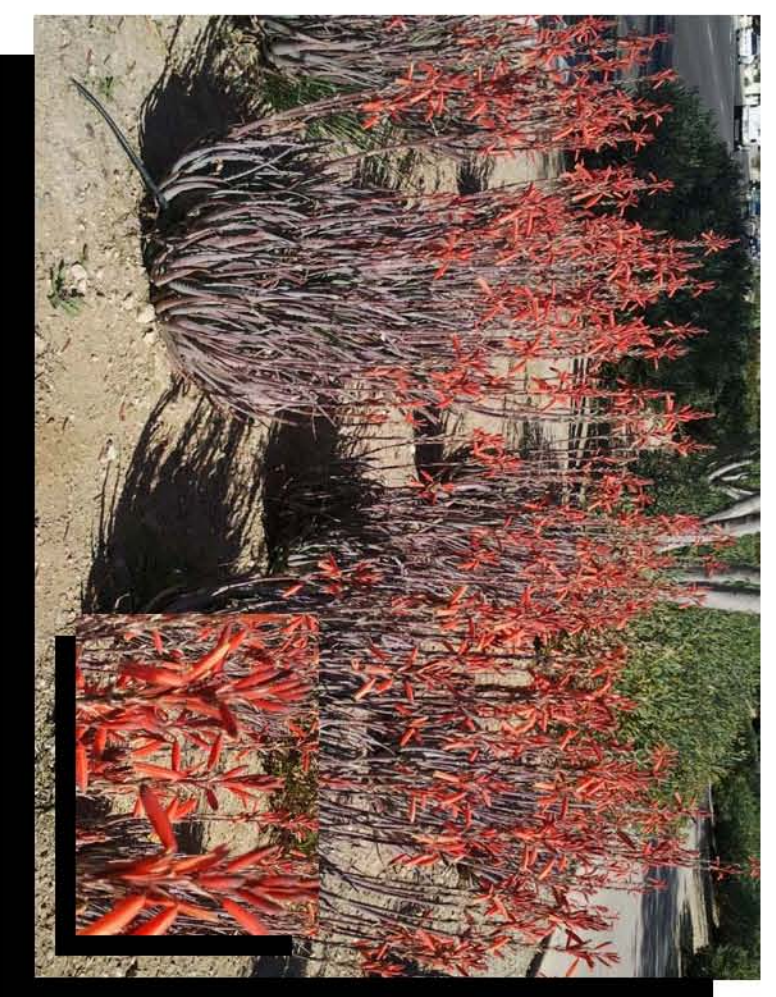
ACACIA REDOLENS 'DESERT CARPET'
DESERT CARPET (1m)



LANTANA SPP 'TALLAS RED'
DALLAS RED LANTANA



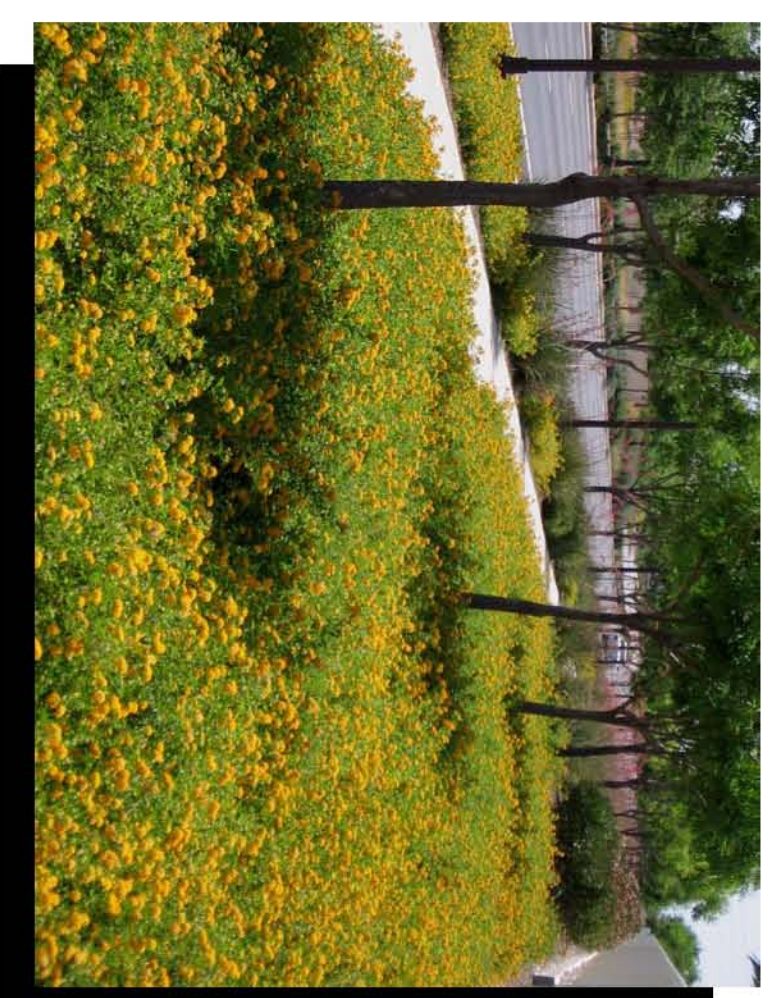
HERRALICE PARKFOLIA
RED YUCCA



ALICE X BLUE ELF
BLUE ELF ALICE



HYPERICUM SCABRUM
XERENTIA DAVIS



LANTANA SPP 'NEW GOLD'
YELLOW LANTANA



Cantata

32nd Street & Baseline Road

Ward Development

2152 S. Vineyard, Ste. 123, Mesa, Arizona 85210



Planting
Landscape Architecture
1881 E. Harrison Street
Chandler, AZ 85225
480 782 1110
480 782 1015 fax

Date : February 4, 2013

community
plant palette